



MONTHLY MEMBERSHIP PROGRESS REPORT

District 9 EC

Results as of: 02/28/2019

GMT: OPEN

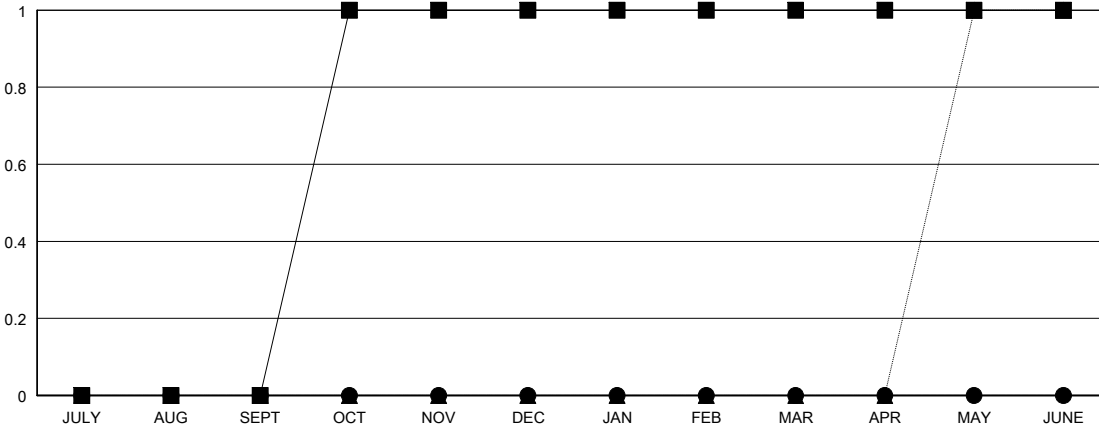
LOCATION IOWA

GMT CA

Clubs			
RESULTS FOR 2018-2019			
QUARTER	NEW CLUB GOAL	NEW CLUBS	DROPPED CLUBS
JULY/AUG/SEPT	0	0	0
OCT/NOV/DEC	1	0	0
JAN/FEB/MAR	0	0	0
APR/MAY/JUNE	0	0	0

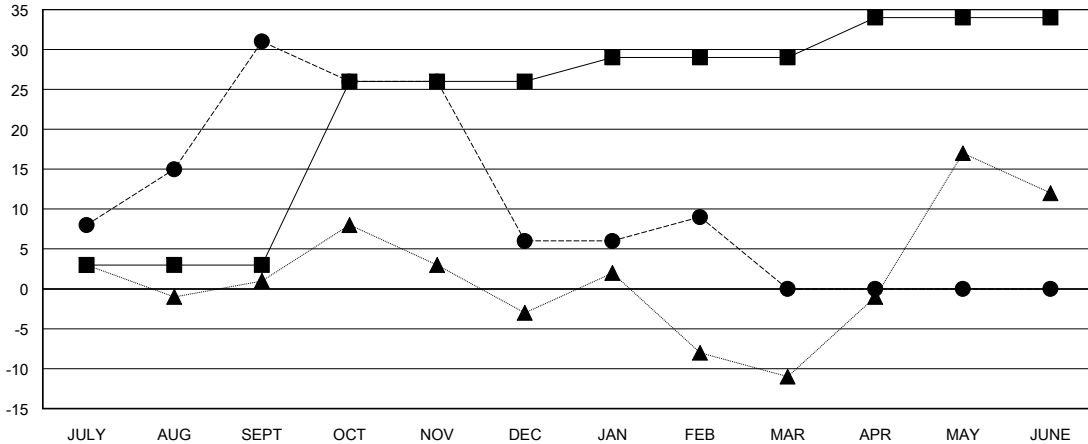
Members			
RESULTS FOR 2018-2019			
QUARTER	MEMBER GROWTH NET GOAL	MEMBER GROWTH ACTUAL	DROPPED MEMBERS ACTUAL (including transfers)
JULY/AUG/SEPT	3	43	10
OCT/NOV/DEC	23	20	43
JAN/FEB/MAR	3	18	12
APR/MAY/JUNE	5	0	0

GOALS AND ACTUAL NEW CLUBS CUMULATIVE



- - CURRENT YEAR GOALS FOR NEW CLUBS
- - CURRENT YEAR ACTUAL NEW CLUBS
- ▲ - LAST YEAR ACTUAL NEW CLUBS

GOALS AND ACTUAL MEMBERS CUMULATIVE



- - MEMBER GROWTH NET GOAL
- - MEMBER GROWTH ACTUAL
- ▲ - LAST YEAR MEMBERSHIP ACTUAL

DROPPED CLUBS: 0	23 CLUBS OF 45 ADDED 1 OR MORE NEW MEMBERS	<u>GENDER DISTRIBUTION</u>			
		MALE	974 (70.32%)		
		FEMALE	411 (29.68%)		
DROPPED MEMBERS		Women Percentage Fiscal Year Goal: 35%			
DECEASED	16	TOTAL FAMILY UNIT MEMBERS	350		
CLUB CANCELLED	0	CLICK HERE FOR CUMULATIVE MEMBERSHIP DATA			
OTHER	49			FAMILY MEMBERS PAYING HALF DUES	177
TOTAL	65				